

THE ALL-NEW
e VITARA
DON'T HESITATE



SUZUKI

Safety Support

Preventive safety technology

SUZUKI'S FIRST GLOBAL
ELECTRIC VEHICLE



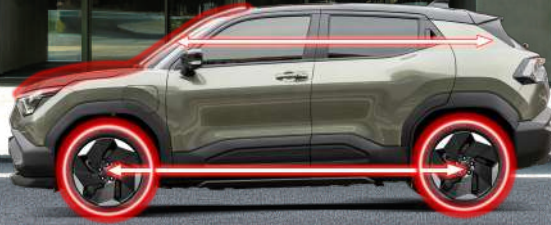
SUZUKI
By Your Side

THE ALL-NEW e VITARA

Conquer your limits. Go further and dig deeper. With its zero-emission EV powertrain, e VITARA sets a new standard for the next generation of SUVs. You and e VITARA, a partnership that reaches beyond to the unknown.

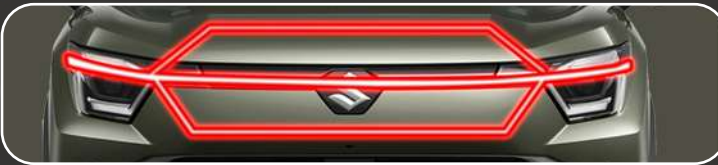
Unique Silhouette

Long wheelbase, large tyres and SUV proportions create a strong, muscular and dynamic presence.



Distinctive hexagonal visage with horizontal through-line

A distinctive hexagon pierced by a single horizontal through-line makes the e VITARA instantly identifiable when viewed from the front or rear.



18" Alloy Wheels

Large-diameter 18-inch alloy that adapt a new wide-spoke design, new resin garnish and wheels featuring low weight and enhances aerodynamic performance, power and beauty.

Iconic 3-Point lamp design

Distinctive 3-point front and rear lamps with a connecting light strip create a bold, high-tech look.



The interior features a design that, in keeping with the motif for the exterior design, reflects both the high-tech nature of the e VITARA as an EV and its go-anywhere adventuring capability as an SUV.



Floating Center Console

Modern floating console with shift-by-wire controls, storage and charging access.



Ambient lighting

3D ambient lighting offers 12 colors and 7 brightness levels.

Don't hesitate
to go forward.



Steering Wheel

New two-spoke steering wheel provides clear visibility and easy entry.



Electric parking brake

Finger-tip operation replaces conventional parking brake engagement.



Integrated Display System

The e VITARA introduces a new integrated display system that combines the meter and infotainment system displays into a single unit. Controls for display customization, air conditioning and other functions are also incorporated into the integrated display to allow intuitive operation.



Meter Display

10.25-inch display offers three customizable layouts and driving information.

INTERIOR FEATURE



Centre Display

10.1-inch display supports smartphone connectivity and quick access to key controls.



360 View Camera

Provides a clear panoramic view for easier parking and maneuvering.



Front Seats

Contoured front seats provide firm, comfortable support



10-way Power Seat Adjust

10-way power driver seat offers customized comfort and support.



Luggage Space

Large, flexible luggage space with sliding rear seats to their front most position provides up to 310L cargo space.



Front Cup Holders

Conveniently placed cup holders within easy reach.

Front Seat Armrest

Ergonomic armrest provides added comfort for various body types.

Rear Seat Power Supply

Rear USB ports (1 Type-A, 1-Type-C) and smartphone tray support passenger convenience.

Console Middle Tray

Illuminated storage tray keeps essentials close at hand.

Front Seat ACC and USB Power Supply

Two USB ports (1 Type-A, 1 Type-C) and accessory socket (12V/120W) support charging and device use.

Wireless Charger
Built-in Qi wireless charger provides easy smartphone charging.



Rear seat armrest

Foldable rear armrest with dual cup holders.



Glass roof

Glass roof with retractable shade creates a spacious and open driving feel



Door mirror heaters

Door mirror heaters help prevent fogging.



Smart Climate Control

Efficient climate control balances comfort and energy use.



INFINITY Sound System

Premium Infinity Sound System delivers clear, powerful and balance audio.



THE ALL-NEW
e VITARA



Land Breeze Green Pearl
Metallic + Bluish Black Pearl

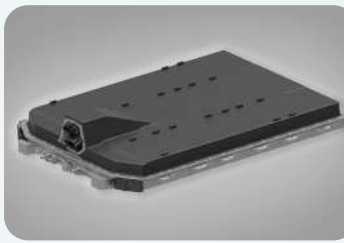
Arctic White Pearl
+ Bluish Black Pearl



AVAILABLE COLORS

EV POWERTRAIN

An all-new EV powertrain delivers efficient, responsive and smooth zero-emission performance. Power is delivered through a compact eAxle electric motor drive unit mounted at the front wheels, providing a smooth, responsive acceleration.



Reliable Battery pack

Lithium iron-phosphate battery pack delivers stable, reliable performance with advanced safety protection.

**Based on in-house testing and room temp DC charging-rapid: 45 minutes (from 10 to 80%) AC charging-7kw, 1 phase: 9 hours (from 10 to 100%)
Actual charging time will vary and is dependent on several factors.



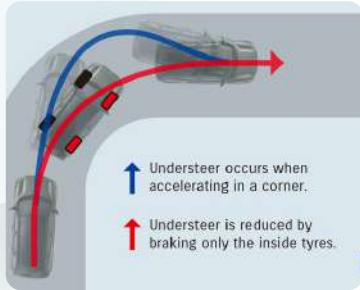
Easy Charging

Easy and convenient charging reaches up to 80% in as little as 45 minutes.



Hill hold Control

Helps prevent rollback on uphill starts by briefly holding the vehicle after brake release.



Active cornering control

Enhances cornering performance by applying braking in the inside wheels.

The e VITARA provides three easily selected driving modes, snow mode, and easy operation pedal mode.



Running modes

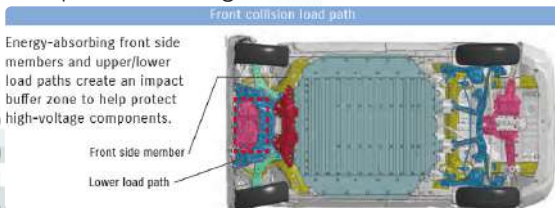
• Driving modes

- ECO extends cruising range by regulating air conditioner power consumption and accelerator response.
- NORMAL provides optimal power delivery for ordinary driving
- SPORT provides quicker response to accelerator pedal input for a more powerful driving experience.

- SNOW moderates changes in torque delivery to roads.
- EASY PEDAL mode allows drivers regulate speed with the accelerator pedal alone. They can choose the level of deceleration that results when they ease off the accelerator pedal.

Impact-absorbing body structure

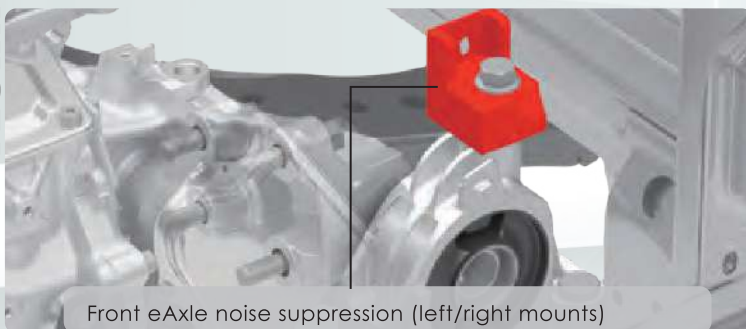
Protects the battery pack and high-voltage components during collisions.



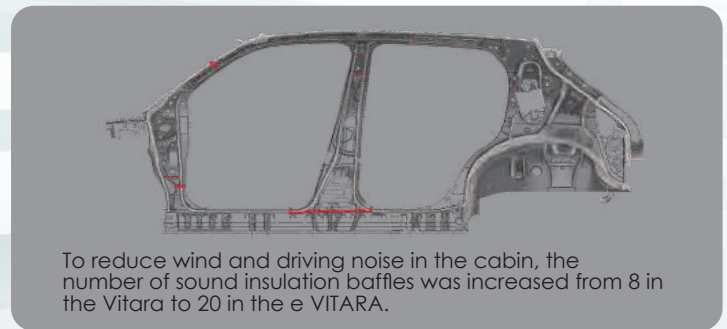
Aerodynamic Performance

Aerodynamic covers and design reduce drag and improve efficiency.

In addition to the aerodynamic covers, alloy wheels with an all-new resin garnish and body design are also designed with aerodynamics in mind.



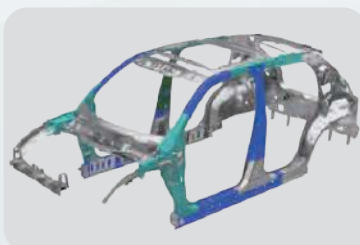
Front eAxle noise suppression (left/right mounts)



To reduce wind and driving noise in the cabin, the number of sound insulation baffles was increased from 8 in the Vitara to 20 in the e VITARA.

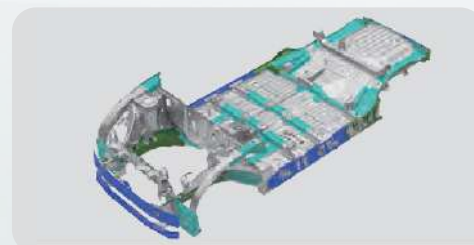
PLATFORM AND BODY

High-tensile materials deliver light weight, high rigidity and improved driving performance.



Upper body

- Optimized high-tensile structure maximizes strength while minimizing weight.
- Body rigidity was enhanced to support the heavy weight of the battery pack and ensure excellent maneuverability.



Under body

High-tensile materials reinforce the underbody for rigidity and battery support.



HEARTECT

HEARTECT-e platform

EV-exclusive HEARTECT-e platform integrates battery and suspension for lightness, rigidity and stability. In addition, the large battery pack is mounted under the floor, creating a low center of gravity that enhances handling.

SUZUKI Safety Support

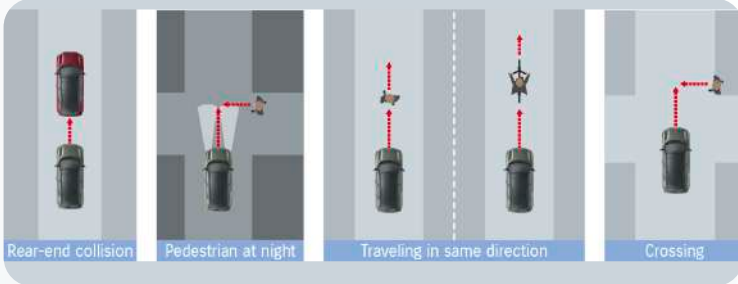
Preventive safety technology

Note: Safety technologies assist driving but may not operate effectively in all conditions. Always drive safely.



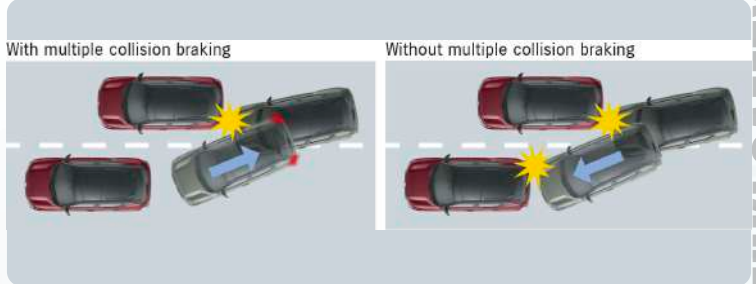
Dual Sensor Brake Support II (DSBS II)

Millimeter-wave radar and a monocular camera detect vehicles, bicycles*, and pedestrians ahead. The system provides audio/visual alerts and can automatically assist or apply braking to help avoid or reduce collisions. *Daytime only.



Multiple Collision braking

Automatically activates braking after a collision to help prevent secondary impact.



Lane Keep Assist (LKA)

Helps keep the vehicle centered while adaptive cruise control is active.



Lane Departure Prevention (LDP)

Warns and assists when the vehicle drifts from its lane.



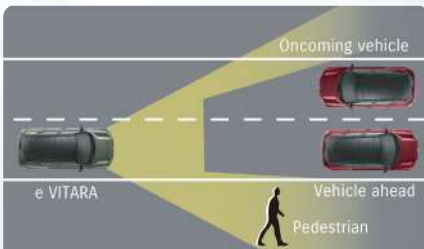
Rear Cross Traffic Alert (RCTA)

Detects and warns of approaching vehicles when reversing.



Adaptive Cruise Control (ACC)

Maintains selected speed and distance for relaxed driving.



Adaptive High Beam System (AHS)

Automatically adjusts headlamp brightness and illumination.



Blind Spot Monitor (BSM)

Detects vehicles in blind spots and provides alerts.



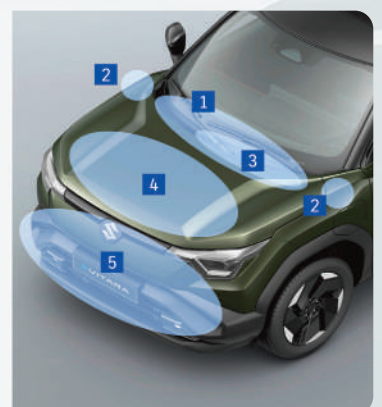
Seven Airbags

Comprehensive seven-airbag system enhances occupant protection.

Pedestrian injury mitigating body

The front bumper, bonnet and other front-end components are designed to absorb impact and help mitigate pedestrian head and leg injuries in the event of a collision.

- 1 Impact-absorbing cowl top
- 2 Impact-absorbing bonnet hinges
- 3 Impact-absorbing wiper system
- 4 Impact-absorbing bonnet
- 5 Impact-absorbing front bumper



MAJOR SPECIFICATIONS

DIMENSIONS		GLX	
Overall length	mm	4,275	
Overall width	mm	1,800	
Overall height	mm	1,635	
Wheelbase	mm	2,700	
Minimum turning radius	m	5.2	
Minimum ground clearance	mm	180	
MOTOR & TRANSMISSION			
Maximum output	kW	128 (174 ps)	
Maximum torque	Nm	193	
Transmission	Single speed electric drive		
TRACTION BATTERY & SUPPLIED CHARGER			
Type	Lithium Iron Phosphate		
Battery	Capacity	kW	61
Charging port with charge lid lamp (indicator lamp; green / lid light: white)	AC charging inlet	Type2 (1phase)	
	DC charging inlet	CCS2	
On board charging performance	kW	7	
Driving range	*Based on New European Driving Cycle Test (NEDC)	km	475
Portable Charger	Cable length	m	7.5
	Charging mode	Mode 2	
	Wall Plug	Type B	
	Cable Capacity	2.3 kW / 10A / 1Phase	
UNDERCHASSIS			
Steering	Rack & pinion		
Brakes	Front	Ventilated disc	
	Rear	Ventilated disc	
Suspension	Front	MacPherson strut	
	Rear	Multi link	
Wheels	18" machined alloy wheels w/ full garnished		
Tyre size	225/55R18		
Spare Tire	Equipped with Tire Puncture Repair Kit		
CAPACITIES			
Seating capacity	persons	5	
Luggage capacity	Rear seatback raised (VDA method)	litres	238-310
	Rear seatback folded (VDA method)	litres	562
WEIGHTS			
Curb weight	kg	1,799	

MAJOR EQUIPMENT

EXTERIOR FEATURES			
Rear end spoiler	Roof coloured		
Outside door mirrors	Body coloured		
	Electric fold (linked with keyless entry)		
Headlamps (LED)	Auto headlight		
	Head lamp leveling (auto)		
	Follow me home and lead to vehicle lamp		
Daytime Running Lamp (DRL)	LED		
Fog lamps (LED)	Front		
	Rear		
Turn signal lamps (LED)	Door mirrors		
High mounted stop lamp (LED)			
Tailgate garnish	Body coloured		
Door key cylinder	Driver's door only		
Wipers	Front:	2-speed (low high) + adjustable sensitivity + washer	
		Automatic wiper (rain sensor)	
	Rear:	1-speed + intermittent + washer	
INTERIOR FEATURES			
Glass roof	With sunshade		
Seat upholstery material	Fabric and synthetic leather		
Front seat	Driver seat w/ 10-way power adjustment	Seat slide	
		Seat recline	
		Seat height adjuster	
		Cushion tilt	
		Lumbar support	
	Passenger Seat	Seat slide	
		Seat recline	
		w/ Seat back pocket	
	Head restraint (driver and passenger)		
	Heated seats (driver and passenger)		
Rear seat	4:2:4 split rear seatback (single-fold)		
	Seat sliding (with luggage room slide board)		
	Seat reclining		
	Centre armrest (with cup holder x2)		
	Head restraint (side), saddle (centre)		
Rear view mirror	Auto Anti-glare		
Sun visors	Vanity mirror		
	Ticket holder		
Centre Console	Cup holder x2		
	Console box with armrest		
	Console middle tray		
Glove box			
Storage pockets	Front doors		
Assistant grips	Passenger and rear		
Bottle holders	Front x2		
	Rear x2		
Coat hooks	Rear x2		
Luggage room	Parcel shelf		
	Luggage board		
	Luggage box		
	Shopping bag hook x1		
Foot rest			
DRIVING AMENITIES			
Air conditioner	Heater		
	Smart Automatic Climate Control (single zone)		
	Pollen filter		
Electric windows (up / down auto)	Front		
	Rear		

Central door locking	Switch on driver's side		
Keyless system	Power door locks		
	Keyless entry		
	Keyless push start		
Remote-control doorlocks	With hazard lamp and outside buzzer answerback function		
12V accessory socket	Centre console		
USB port	Front:	Type A for IDS, Type C for charging	
	Rear:	Type A and Type C for charging	
Wireless charger			
Tailgate opener	Electromagnetic type		
Rear Defogger			
Lightings (LED)	Front room spot lamp (3-position)		
	Rear room lamp (3-position)		
	Glove box light		
	Footwell light (front)		
	Luggage room lamp		
	Ambient light (12 colours)		
ENTERTAINMENT SYSTEM			
Infinity Sound System	Radio AM/FM		
	Connectivity	Apple CarPlay	wire & wireless
		Android Auto	wire & wireless
		Bluetooth	
	Speaker (x4)		
	Tweeter (x2)		
	Subwoofer		
Antenna	Shark's Fin type		
STEERING AND INSTRUMENT PANEL			
Integrated Display System (IDS)	10.25-inch meter display		
	10.1-inch centre display touchscreen	Audio entertainment	
		Air conditioner controls	
		Assistive driving function instructions	
		EV setting	
		Vehicle settings	
		Charging schedule settings	
		Clock	
		Outside temperature	
		Illumination control	
2-spoke steering wheel	Synthetic leather		
	Tilt and telescopic-adjust		
Steering wheel commands	Audio		
	Voice recognition		
	Adaptive Cruise Control (ACC)		
	Lane Keep Assist (LKA)		
	Information display		
Reminder	Adaptive high beam system warning light		
	Light-off warning buzzer		
	Low battery warning		
	Power off warning buzzer		
	Door ajar warning lamp		
	Parking brake reminder		
	Shift dial		
	Reverse - Neutral - Drive		
Driving mode switch	ECO -> NORMAL -> SPORT		
	Easy operation pedal switch		
SNOW mode switch			
SAFETY AND DRIVING ASSIST			
Anti-Lock Brake System w/ Electronic Brakeforce Distribution			
Electronic Stability Program			
Power steering	Electric Power Steering		
Electric Parking Brake			
Brake hold function			
Suzuki Safety Support	(1) Dual Sensor Brake Support II (DSBS II)		
	-Rear-end collision	Detect vehicle & motorcycle	
	-Pedestrian at night (travelling in same direction or crossing)	Detect pedestrian only	
	-Travelling in same direction	Detect bicycle & pedestrian	
	-Crossing	Detect bicycle & pedestrian	
	(2) Multiple collision braking		
	(3) Lane Keep Assist (LKA)		
	(4) Lane Departure Prevention (LDP)		
	(5) Adaptive Cruise Control (ACC)		
	(6) Adaptive High Beam System (AHS)		
	(7) Blind Spot Monitor (BSM)		
	(8) Rear Crossing Traffic Alert (RCTA)		
Emergency stop signal			
Impact sensing door unlock system			
Parking cameras	360 view camera		360 Degrees view camera
			360 Degrees Surround View
			Bird's-eye view
			Eye-level view
Parking sensors	Front and rear		
Hill hold control			
Acoustic Vehicle Alerting System (AVAS)			
SRS Airbags	Front dual		
	Front side		
	Curtain		
	Knee		
Seatbelts	Front: 3-point ELR seatbelts with pretensioner, force limiter & shoulder height adjuster		
	Rear: 3-point ELR seatbelts with pretensioner & force limiter (side x2)		
Seatbelt reminder (front & rear)	Lamp & alarm		
Occupant detection	Front		
ISOFIX lower anchorage	x2		
Top tether anchorage	x2		
Childproof rear door locks			
Side impact door beams	Front & rear		
SAFETY AND DRIVING ASSIST			
Security alarm	Door & hood		
Immobiliser			



Specifications on this brochure are based on the latest available information at the time of production. Photos and Colors in this brochure do not exactly match actual vehicle due to the printing process. Please consult your authorized Suzuki dealer on vehicle specifications. We reserve the right to make changes without prior notice or obligation. Printed June 2026.

For Inquiries, please contact: